

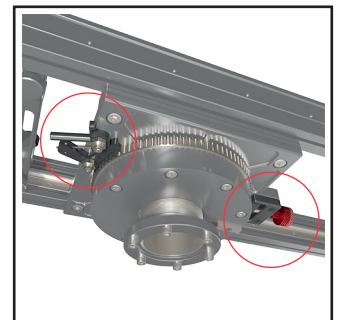
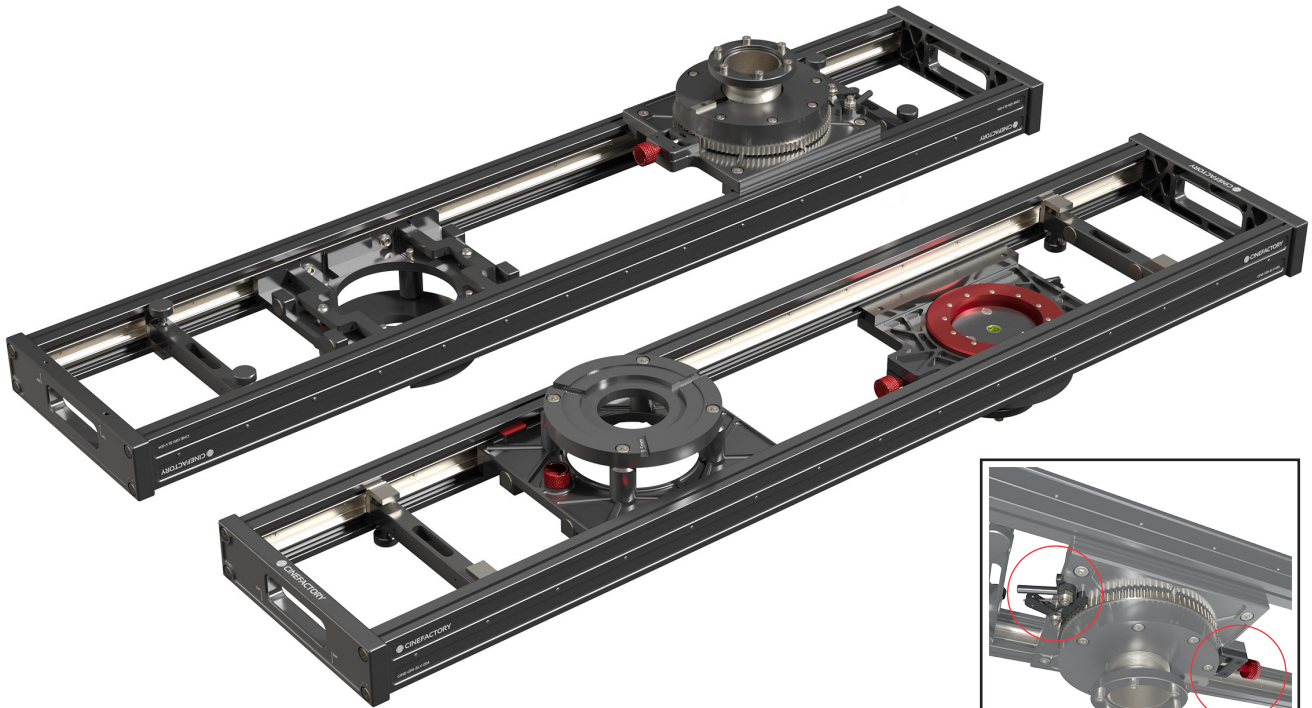
SLIDER VR

LIGHTWEIGHT FULL-LENGTH ALUMINIUM SLIDER

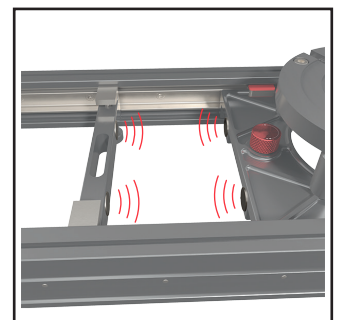
Quiet, free-flowing, high-accuracy aluminium slider manufactured for professionals.

All parts are in-house designed and machined in our CNC workshop.

Together with the SLIDER HR, these two slider systems have been specifically developed to meet all your shooting requirements while still providing great value for money.



Dual locking system



Magnetic stops



UNC inserts

FEATURES

- Weight: 17 kg / 37.5 lbs (120 cm / 4').
- Supports loads up to 500 cm / 16'4".
- Standard Mitchell plate carriage mount.
Alternatives: 100 and 150 mm bowl or Euro-adaptor mount.
- Base mount: tailor-made support that allows a 360° rotation linked to a dual locking system to avoid any mechanical backlash.
- Rails: HepcoMotion® stainless steel. Customizable with extra interchangeable rails: 9 lengths available from 60 cm / 2' up to 320 cm / 10'6".
- Magnetic stops that allow full sliding travel.
- Monopods can be installed on both ends to increase stability for heavy loads (3/8"-16 or 1/4"-20 UNC inserts).
- Locking lever to easily stop the carriage.
- Built-in bull's eye level.



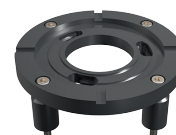
OPTIONS



Interchangeable rails
from 60 to 320 cm / 2' to 10'6"
CINE-GRI-SLV-101>9



Bowls
Ø 100 mm / 4" | CINE-GRI-SLI-102
Ø 150 mm / 6" | CINE-GRI-SLI-103



Mitchell adapter
CINE-GRI-SLI-101



VR tubes support
1x | CINE-GRI-SLV-110
2x | CINE-GRI-SLV-111



Aluminium feet for tubes
Ø 50 mm / 2" - L 600 mm / 2'
CINE-GRI-SLI-108



Customized slider flight cases
S: up to 100 cm / 3'3" | CINE-GRI-SLI-105
M: up to 180 cm / 5'10" | CINE-GRI-SLI-106
L: up to 240 cm / 7'10" | CINE-GRI-SLI-107

